

5 Bed Apartment

St Johns Wood, United Kingdom



£1,990 per week



5 Bedrooms

5.0 Bathrooms

Apartment

Property Description

A superb five bedroom apartment located on the 5th floor of a prestigious mansion block which offers fabulous views over Regents Park.

The apartment offers over 2,500 sq ft of living space and comprises five double bedrooms all with en-suite bathrooms, large dual aspect reception room, dining room, modern fitted kitchen, guest cloakroom and further benefits from ample storage space.

This beautiful apartment building is located directly opposite one of the entrances to Regent's Park which provides an array of sporting facilities including the largest outdoor sports area in central London.

This beautiful property is located within a 10 minute walk from St John's Wood underground station (Jubilee Line), Marylebone station (Bakerloo and national railway).

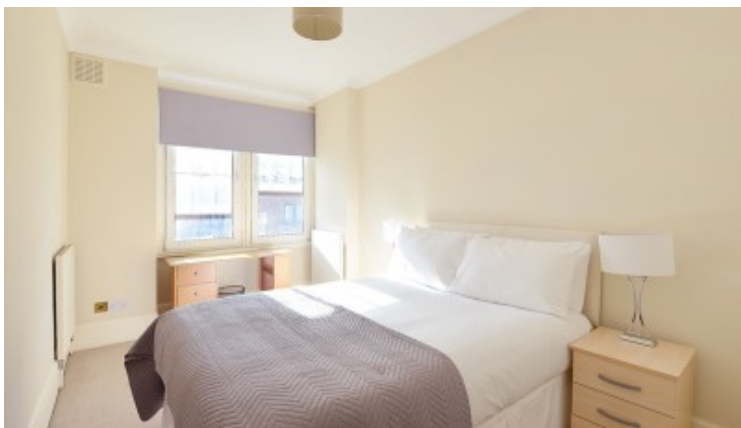
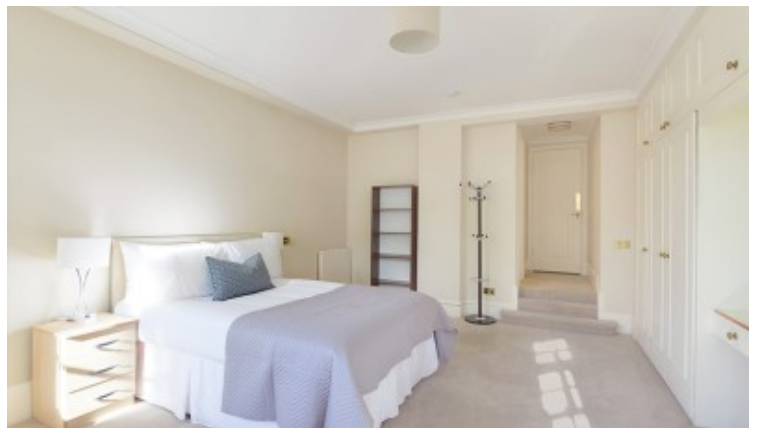
This apartment would be ideally suited to young professionals or students due to its proximity to the West End, as well as a number of top colleges and universities such as London Business School, University of Westminster and the Royal College of Physicians.

All tenants benefit from a dedicated on-site or building manager who is on hand to assist with any property related issues, with also a 24-hour emergency helpline provided.

The property benefits from a lift, portorage and is close to the myriad of shopping opportunities of the West End.

The building is close to the famous Lords Cricket ground and opposite the beautiful Grade I listed Regent's Park, home to London Zoo. The award winning St John's Wood High Street is a few minutes away, with numerous boutique shops, vibrant bars and high end restaurants.

Photo Gallery



Score	Energy rating	Current	Potential
92+	A		
81-91	B		82
69-80	C	73	
55-68	D		
39-54	E		
21-38	F		
1-20	G		

Property Details

- **Property Type:** Apartment
- **Location:** St Johns Wood, United Kingdom
- **Price:** £1,990 per week
- **Bedrooms:** 5
- **Bathrooms:** 5.0

Property Features

- Prestigious Art Deco Mansion Block
- 2503 sq ft of Living Space
- 5 Bedrooms
- 5 Bathrooms
- Ample Storage Space
- Video Entry
- Fabulous Views
- Porter
- Lifts
- Local Amenities